

***rj29Tg/+* (AB) (CZRC Catalog ID: CZ 15)**

Nature of the mutation

The *rj29Tg* allele is a transgenic zebrafish line *Tg(-1.2ins:EGFP)* with green fluorescence expressed in the insulin-producing beta cells.

Genotyping assay

Genotyping of the *rj29Tg* allele is based on the fluorescent microscopy. The GFP fluorescence in *Tg(-1.2ins:EGFP)* is observed in the insulin-producing beta cells at 3dpf.

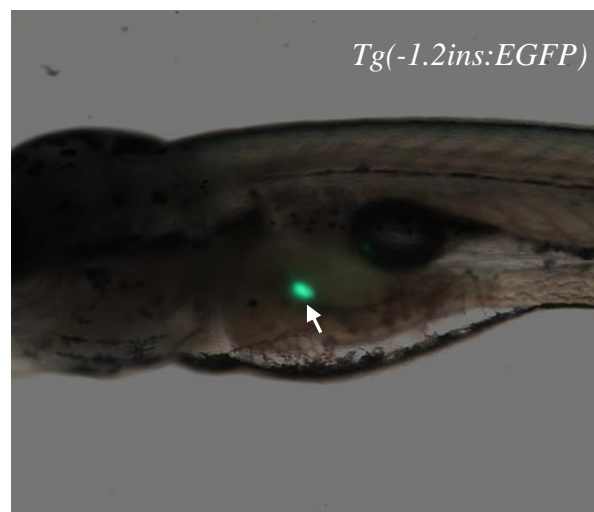


Figure. Dynamic GFP expression pattern in the insulin-producing beta cells in line. The figure show the lateral view of *Tg(-1.2ins:EGFP)* embryos at 3dpf. The arrow shows the expressed GFP in the insulin-producing beta cells.

Reference

Xu PF, Zhu KY, Jin Y, Chen Y, Sun XJ, Deng M, Chen SJ, Chen Z, Liu TX. Setdb2 restricts dorsal organizer territory and regulates left-right asymmetry through suppressing *fgf8* activity. *Proc Natl Acad Sci U S A*. 2010 Feb 9;107(6):2521-6. doi: 10.1073/pnas.0914396107. Epub 2010 Jan 21.